

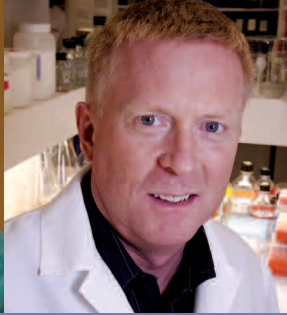
# Navigating Diabetes Research: From Causes to Care



Dr. Bruce Verchere



Dr. Garth Warnock



Dr. Gordon Francis

## MODERATOR >

### Dr. Rhonda Low

Host of "Your Health" daily on CTV at 5. Dr. Low is a family physician and Clinical Associate Professor in the Department of Family & Community Medicine at UBC.



Join us for a discussion about diabetes that goes beyond finger pricks and blood sugars. From prevention and risk factors to advances in treatment and care, our experts will navigate the complex world of diabetes and situate today's research in the progress towards a cure.

## SPEAKERS:

- **Dr. Bruce Verchere**  
Head, Diabetes Research at the Child & Family Research Institute  
Irving K. Barber Chair in Diabetes Research  
Professor, Departments of Surgery and Pathology & Laboratory Medicine, UBC
- **Dr. Garth Warnock**  
Co-Director, Ike Barber Human Islet Transplant Laboratory and British Columbia Islet Transplant Program, Vancouver Coastal Health Research Institute & UBC  
Surgeon-In-Chief, Vancouver Teaching Hospitals  
Head, Department of Surgery, UBC
- **Dr. Gordon Francis**  
Professor of Endocrinology and Metabolism, UBC  
Director, Healthy Heart Program Prevention Clinic  
Director, Heart and Stroke Foundation Lipid Research Laboratory, Providence Heart + Lung Institute at St. Paul's Hospital

This event is part of UBC Celebrate Research Week.

## Free Public Talk Wednesday, March 11, 2009 7:00–9:00 pm

Doors open at 6:00 pm. The Canadian Diabetes Association will be available to provide information about how to reduce your risk and better manage your diabetes through a healthy active lifestyle.

## Location:

Chan Centre for Family Health Education at the Child & Family Research Institute, 938 West 28th Ave, Vancouver, B.C.

## How to register:

Registration is free, but space is limited. To register, email: [reseduc@cw.bc.ca](mailto:reseduc@cw.bc.ca) or phone 604.875.2000 ext. 5397.

## For more information:

[www.cfri.ca](http://www.cfri.ca)



[www.celebrateresearch.ubc.ca](http://www.celebrateresearch.ubc.ca)



[www.cfri.ca](http://www.cfri.ca)



PROVIDENCE HEALTH CARE  
Research Institute  
Pursuing real life health solutions

[www.providenceresearch.ca](http://www.providenceresearch.ca)



[www.vchri.ca](http://www.vchri.ca)